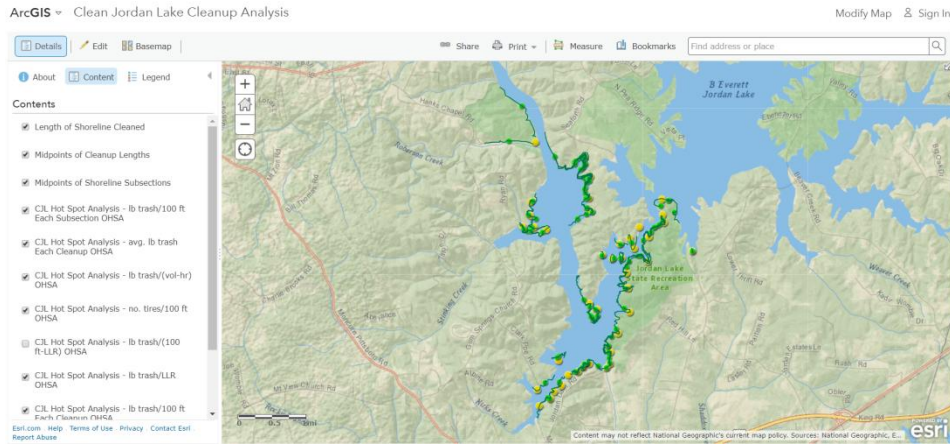
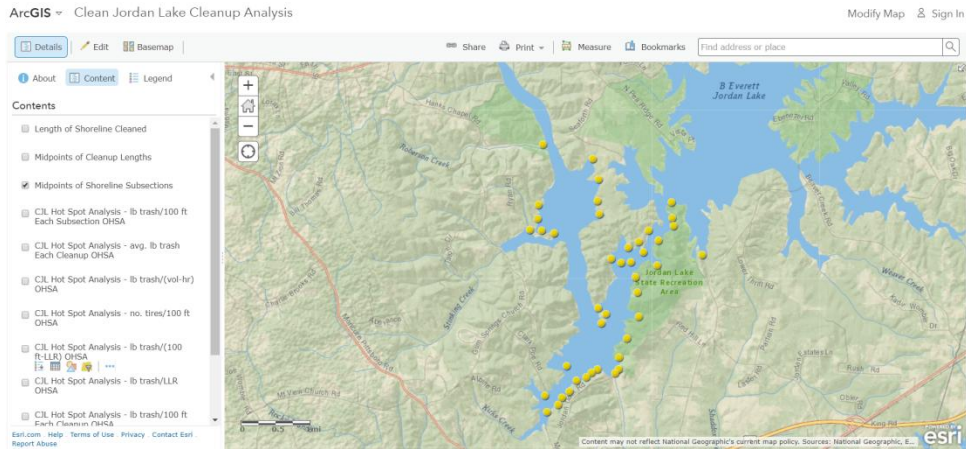


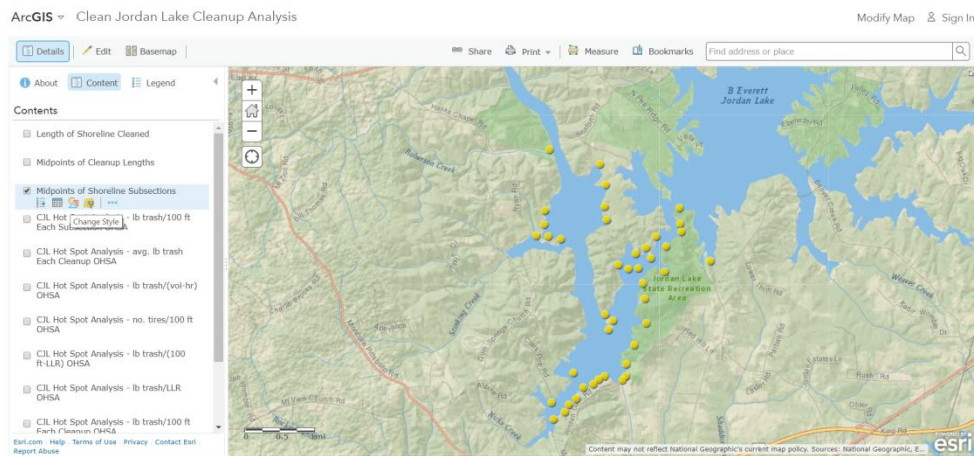
1. Click on the link to ArcMap on GIS Trash Map webpage and then on Content.



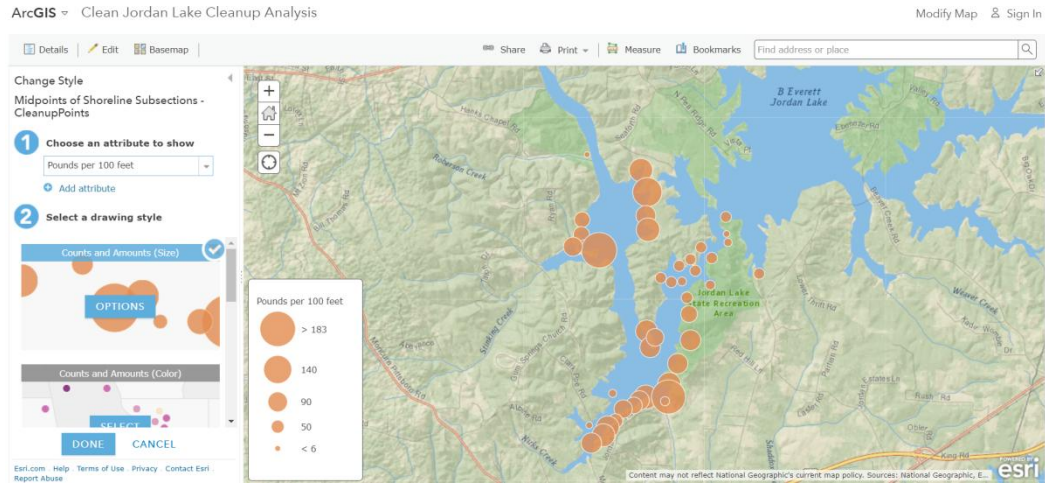
2. Uncheck Contents to focus on a single of interest, e.g., “Midpoints of Shoreline Subsections”



3. Hold cursor over Midpoints of Shoreline Subsections and Click on “Change Style”, 3rd icon from left

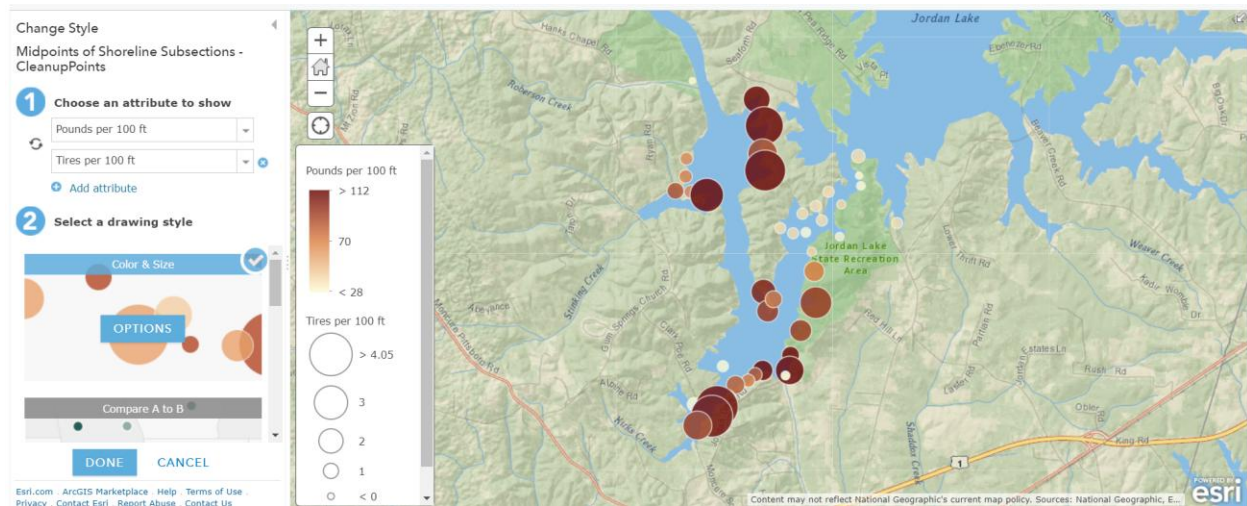


- Use pull-down window under the encircled “1” to switch the parameter from “Show location only” to other of interest, e.g., “Pounds per 100 feet”. Under the encircled “2” “Select a drawing style” to choose how to display results, e.g., circles to depict bin sizes of trash loading.



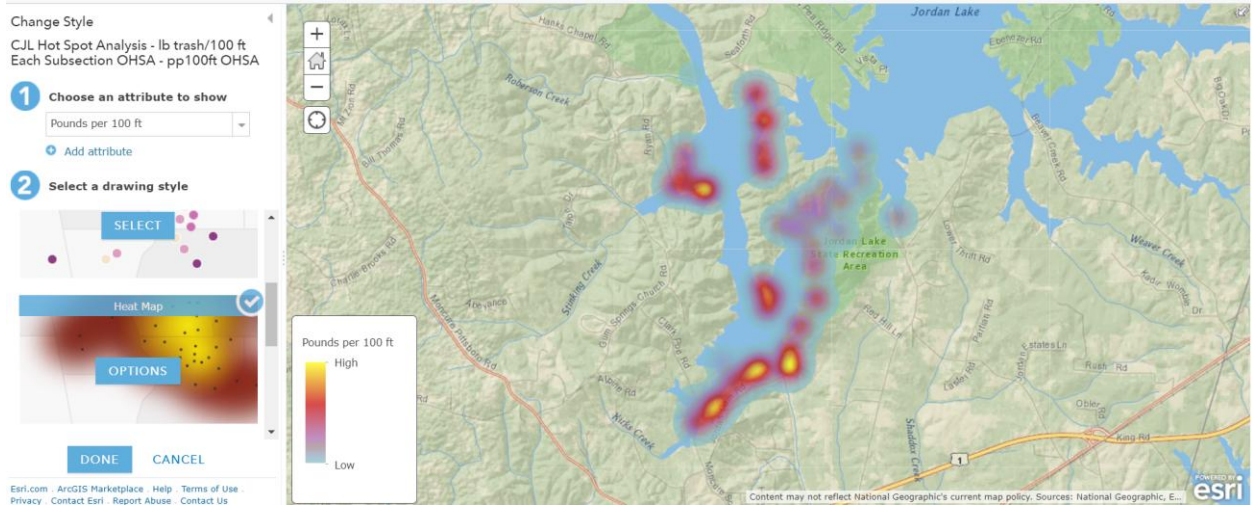
Click DONE

- Add another layer of information by clicking “Add attribute” under encircled “1”. Click DONE. In this example, “Tires per 100 feet” is added to “Pounds per 100 feet”. The deeper the shade of color, the more intense is the trash loading as “Pounds per 100 feet” and the larger the size of circle, the greater is the tire loading as “Tires per 100 feet”.



- To view an Optimum Hot Spot Analysis (OSHA), check the box under Contents next to the desired OSHA, e.g., lb/100 ft. Hover the cursor over the checked box and click “Change Style”, the 3rd icon from left. Use the pull-down window at encircled “1” to choose an Attribute to

Show, e.g., pounds trash per 100 ft. Under the encircled “2” Select a Drawing Style, choose “Heat Map” to display yellow for hottest spots (highest values) and blue for coldest spots (lowest values).



Click DONE